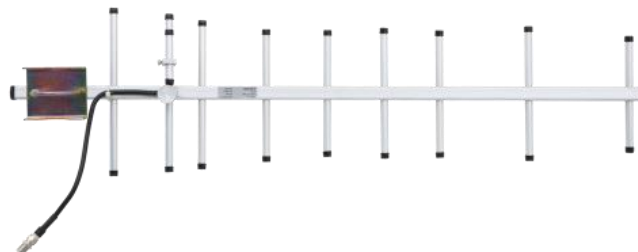


HORWIN AY9009

HORWIN AY9009 - is a 9 elements directional antenna yagi with a gamma match using for feeding of driven element. It is used for the solutions of increasing the performance of fixed terminals GSM/LTE-900 standard. Antenna parts are made of galvanized aluminum. Plastic mounting elements are not used for this construction, to avoid UV and atmospheric factors influence.

The feeder connected through F-female connector or another type (special order needed). Ordering package includes mounting hardware — a U-bolt and special mounting bracket for rear mounting to the mast up to 40 mm OD.



| AY9009 | |
|-------------------------|------------------|
| Elements | 9 |
| Frequency range, MHz | 870 – 970 |
| Bandwidth, MHz | 100 |
| SWR | < 1.5 |
| Power rating, W | 100 |
| Gain, dB | 10 |
| Front to Back ratio, dB | 25 |
| Beamwidth (H-plane) | 40° |
| Beamwidth (E-plane) | 50° |
| Nominal impedance, Ohm | 50 |
| Dimensions (H x W), mm | 665x180 |
| Weight, kg | 0.4 |

